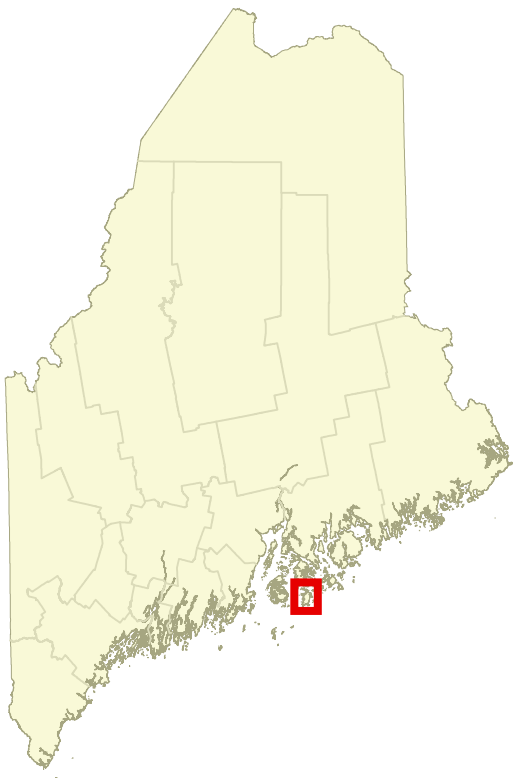


Beginning with Habitat (BwH)
equips Maine communities, landowners, and conservation partners with tools to protect, restore, and connect important habitats and ecosystems in a changing climate.
www.beginningwithhabitat.org

Water Resources & Shoreland Habitats

Isle au Haut

This map is nonregulatory and is intended for planning purposes only



Maine Stream Habitat Viewer

Road Stream Crossings

Barrier

Potential Barrier

No Barrier

*Crossings on private roads not shown.

[Find crossing details on the Stream Viewer - beginningwithhabitat.org/maps](http://beginningwithhabitat.org/maps)

Organized Towns

Developed

Impervious surfaces including buildings and roads.

Shellfish Growing Areas

Distributions of molluscan shellfish species.

Wetlands

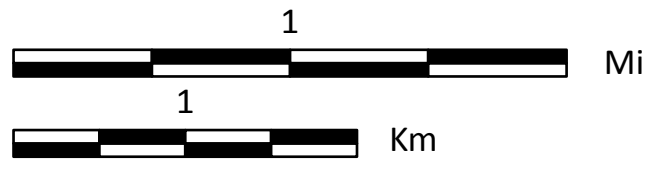
National Wetlands Inventory (NWI) uses aerial photographs to approximate wetland locations. NWI data typically under represents the presence of wetlands on the landscape.

Shoreland Areas

Areas are delineated by ME Dep. of Environmental Protection's Mandatory Shoreland Zoning Act, which includes areas within 250 feet of great ponds, rivers, and wetlands, and within 75 feet of streams. The regulations within each shoreland zone depends on the town, and towns may regulate greater areas than what is shown here. For more information, please visit: <https://www.maine.gov/dep/land/slz/>

TOWNSHIP BOUNDARIES
Maine Office of GIS (2020)
ROADS
Maine Office of GIS, Maine Department of Transportation (2021)
HYDROLOGY
USGS National Hydrography Dataset (2016)
DEVELOPED
CCAP NOAA Impervious land cover (2022)
NATIONAL WETLANDS INVENTORY
U.S. Fish & Wildlife Service (2020)
SHORELAND AREAS
Maine Office of GIS,
Maine Natural Areas Program (2011)
BROOK TROUT PRIORITY CONSERVATION AREAS
Maine Department of Inland Fisheries & Wildlife (2020)

MAINE HERITAGE FISH WATERS
ME Dep. of Inland Fisheries & Wildlife (2022)
ATLANTIC SALMON HABITAT
ME Dep. of Marine Resources (2024)
SHELLFISH
Maine Department of Marine Resources (2010)
ME ROAD STREAM HABITAT CROSSINGS
Maine Department of Inland Fisheries & Wildlife,
US Fish and Wildlife Service (2022)



Scale: 1:22,000
Projection: UTM 19N
Datum: NAD 1983



Supported in part by
Maine Outdoor
Heritage Fund
lottery ticket sales

Map Prepared by Maine
Department of Inland
Fisheries & Wildlife
April 2025

Supported in
part by Local
Conservation
Funds

